



jordan fishwick

ALTRINCHAM
Woodfield Road



Woodfield Road, Altrincham, WA14 4YQ

Asking Price £180,000



The Property

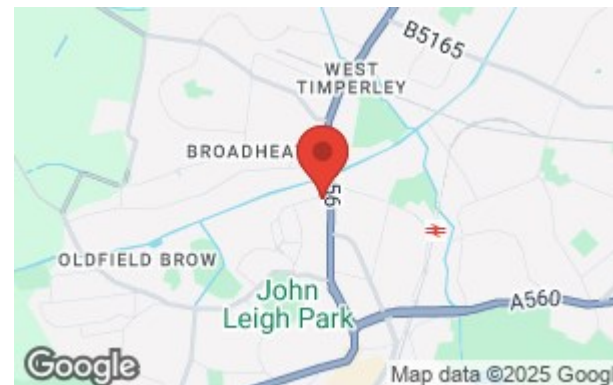
Located within a short walk to local tram stops which link to Altrincham Town Centre and Manchester City Centre, as well as local amenities and shopping parks, this modern third floor one bedroom apartment is ideally located within a development built in 2018.

The property consists of an entrance hall, lounge diner, kitchen, double bedroom with recess for wardrobe space and fitted main bathroom. There is allocated underground parking and the property has a secured entrance and intercom system.

The property is also offered with no onward chain. Please contact our Hale Office on 0161 929 9797 to arrange any viewings.

Directions

WA14 4YQ



- No Onward Chain
- Lease 250 years from 2018
- Ground Rent £168.47 p.a.
- Service Charge £1,820 p.a
- Modern One Bedroom Apartment
- Allocated Underground Parking
- Third Floor Apartment
- Lift Access
- Secure Intercom System
- Close to Transport Links

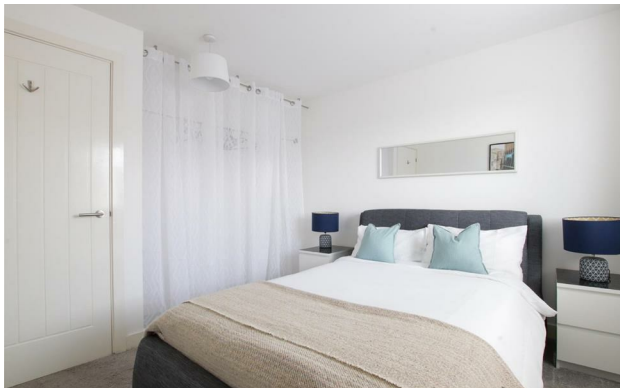
Postcode - WA14 4YQ

EPC Rating - B

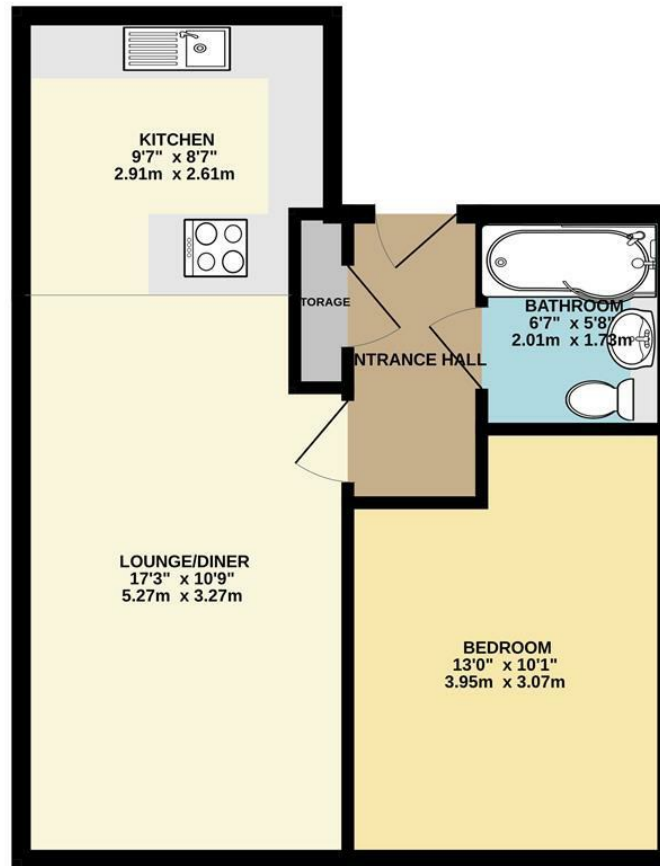
Floor Area - 472.00 sq ft

Local Authority - Trafford

Council Tax - C



THIRD FLOOR
474 sq.ft. (44.0 sq.m.) approx.



TOTAL FLOOR AREA : 474 sq.ft. (44.0 sq.m.) approx.

Whilst every attempt has been made to ensure the accuracy of the floorplan contained here, measurements of doors, windows, rooms and any other items are approximate and no responsibility is taken for any error, omission or mis-statement. This plan is for illustrative purposes only and should be used as such by any prospective purchaser. The services, systems and appliances shown have not been tested and no guarantee as to their operability or efficiency can be given.
Made with Metropix ©2025



These particulars are believed to be accurate but they are not guaranteed and do not form a contract. Neither Jordan Fishwick nor the vendor or lessor accept any responsibility in respect of these particulars, which are not intended to be statements or representations of fact and any intending purchaser or lessee must satisfy himself by inspection or otherwise as to the correctness of each of the statements contained in these particulars. Any floorplans on this brochure are for illustrative purposes only and are not necessarily to scale.

Offices at: Chorlton, Didsbury, Disley, Hale, Glossop, Macclesfield, Manchester Deansgate, Manchester Whitworth Street, New Mills, Sale, Wilmslow and Withington

0161 929 9797

hale@jordanfishwick.co.uk
www.jordanfishwick.co.uk